



FYI Transition

A Guide to: fyitransition-students.org





OVERVIEW

This website consists of a series of pages, each with a different focus.

Planning; How to plan your future.

Courses: Online training for transition.

Practice: Activities to download.

Topics: Important areas to explore and learn.

Games: Play and learn activities.

Help: Where to find more information.

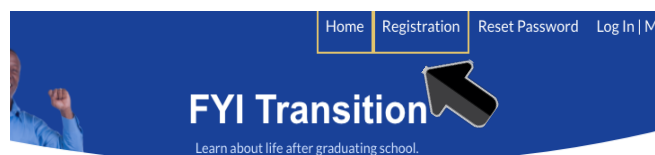
REGISTRATION

It's a good idea to register for the site. Registration creates an account for you. You don't need to register to use the site, except to take the courses, which require an account to keep track of your progress.

The registration form is titled "Registration". It contains the following fields and options:

- Username ***: A text input field.
- User Password ***: A text input field with a strength indicator.
- Confirm Password ***: A text input field with a strength indicator.
- User Email ***: A text input field.
- First Name**: A text input field.
- Last Name**: A text input field.
- I am a ***: A dropdown menu with options: Student or Graduate, Teacher, Family Member, and Other. Below this is a note: "Tell us if you are a student or graduate, a teacher, a family member, or some other role."
- My School**: A text input field.
- My City**: A text input field.
- Submit**: A blue button at the bottom right.

To register, click on the registration link at the top of the home page, as shown above.



To complete the registration, fill out the form that comes up and submit.

NAVIGATION



To move around the website, click on any of the areas to explore. Do this by selecting a topic link. The home page has the topic links near the top of the page.



The main pages also have a link menu on the side. If you hover your cursor over a side menu link, it will expand to tell you what the link is.

Next, we will show what happens when each link is clicked.



USING THE CONTENT



PLANNING

Transition Planning

Coming up with a plan for your transition requires a lot of work and thinking. This page has 3 sections. You can click on a blue button to go to a section, or simply scroll down.

1 WHAT I NEED TO DO

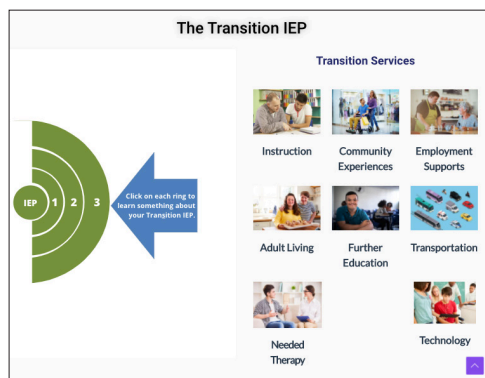
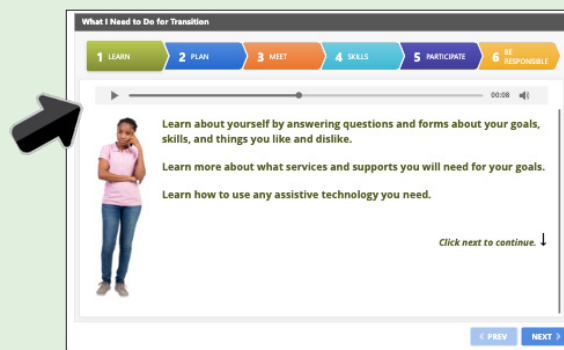
2 THE TRANSITION IEP

3 LEARN ABOUT YOURSELF

The Transition Planning page has 3 different sections. Click a button, and the page will scroll to the section.

1. What I Need to Do

This presentation runs by clicking any of the colored items above, or clicking on NEXT. To have the text read to you, click on the small arrow in the grey bar.



2. The Transition IEP

This section has a clickable set of circles on the left. Selecting each will reveal more information about the Transition IEP.

The right side of the page lists typical transition services.

3. Learn about Yourself

This is a series of self-tests in four areas:

1. Job search preparation
2. Home life skills
3. Social skills for work
4. Healthy living

Each self-test asks users to rate themselves on a series of questions. These are scored and totaled at the end.





Using FYI Transition



Here is an example of a question from the first self-test. Click the answer that best matches you own situation. A popup box over the selection provides some feedback.

To keep track of your self-tests, please see pages 10-11.



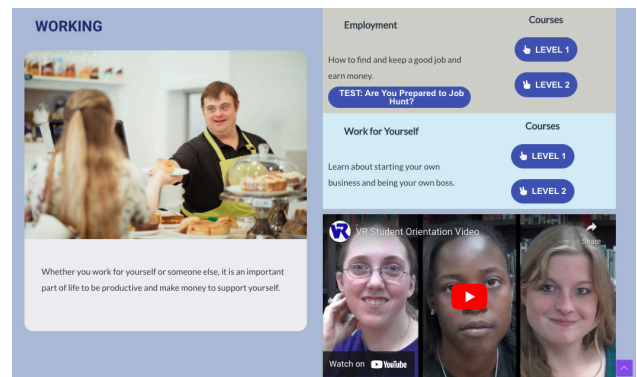
TOPICS



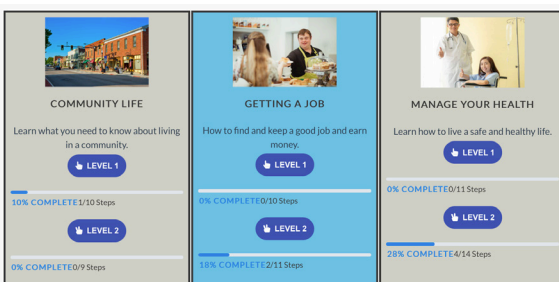
Each contains information on the topic.

There may be links to explore, a video to view, or a course to view.

There are 3 main areas: Working, Living, and Learning. Click any of these or scroll to reach the area.



COURSES

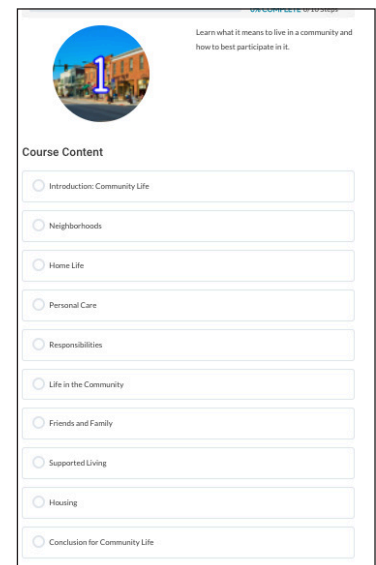


The Course page lists all the courses. You need to be registered to use them.

Each course has two levels. Level One has audio and is self-running. Level Two has a higher reading level.

When you click on a course level, you will see a screen with all the lessons. To start, click on the first one.

When a lesson appears, if there is a presentation, it will begin automatically. You will hear the information and see the lesson. If the lesson has several pages, it will move forward, or you can





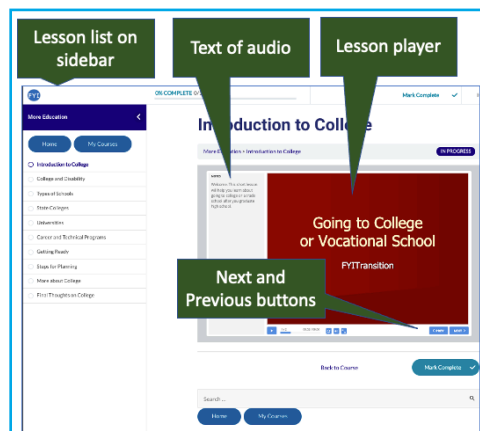
Using FYI Transition

5

jump forward or backward by clicking the NEXT or PREVIOUS button.

When the entire presentation has finished, you can go to the next lesson or a previous one.

Once you move from a lesson you've viewed, it will be marked as complete. To keep track of your courses, please see pages 7-9.



GAMES

The games are about different life areas, such as work, health, or home living.

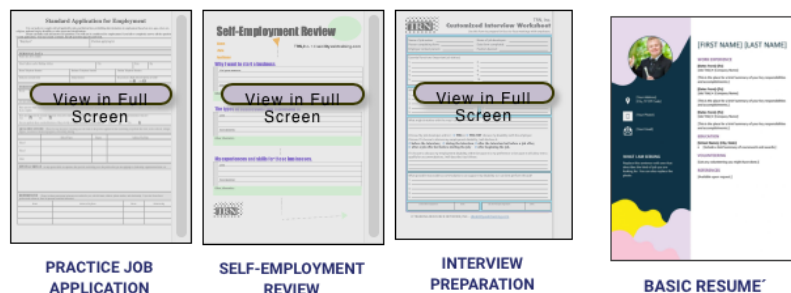
Click on any game to begin. Instructions are provided in each.



PRACTICE ACTIVITIES



This page offers downloadable forms that can be printed and worked on whenever you want.



WHO CAN HELP IN FLORIDA?

This last section lists the agencies and programs that provide transition resources.

You can click on the list, or scroll down to view them all. Each listing provides a summary and a link to the organization's website.

Learn More about Transition in Florida

Take Me to National Information

Learn about Recent Florida Law Changes on Transition

- Division of Vocational Rehabilitation (DVR)
- Florida Division of Blind Services (DBS)
- Bureau of Exceptional Education (BESE)
- Employment First Florida
- Agency for Persons with Disabilities (APD)
- Florida Developmental Disabilities Council
- The Arc of Florida
- Florida Association of Rehabilitation Facilities
- Florida Center for Students with Unique Abilities
- Career Source
- Florida Department of Economic Security
- Florida Commission for the Transportation Disadvantaged (CDT)
- Florida Department of Children and Families, Substance Abuse and Mental Health
- Center for Autism and Related Disabilities (CARD)
- Disability Rights Florida

Division of Vocational Rehabilitation



VRI Website

What It Does: Helps people with disabilities find, keep, or return to employment. Recent law emphasizes:

- Youth services
- Employer services
- Coordinate state services
- Efficiency performance measures

VRI encourages schools to become a VRI vendor to deliver Pre-Employment Transition Services.

Learn More...

Florida Division of Blind Services



DBS Website

What It Does: Helps individuals who are and visually-impaired achieve their goals and live their lives with as much independence and self-direction as possible.

Learn More...

Bureau of Exceptional Student Education (BESE)



BESE Website

What It Does: Administers programs for students with disabilities. Additionally, provides students with special needs services and opportunities for personal and professional growth through collaboration of families, professionals, and communities. BESE has discretionary projects that support efforts throughout the state to support and build capacity in districts to support students with disabilities. Be sure to click on the Grants/Discretionary Projects link on their website to learn more.

Learn More...

You can learn more by clicking on the Learn More about Transition in Florida link.


Also, because Florida laws and rules on Transition can change, there is a button at top, that also appears on the Home Page, that says Learn About Recent Florida Law Changes on Transition.

Clicking this will take you to a page that has information and two presentations on current rules and information on what should happen regarding Transition for students and their families at certain times during school.

Learn More about Transition in Florida

Take Me to National Info

To learn more about what you need to know when you are 12 (or in 7th Grade), and then 14 years old (or first day of high school), click on the two presentations below.



In Florida, planning for my life after school starts when I am 12 or in 7th Grade whichever is first!

If you are interested in more resources beyond Florida, click on the button at top that says, Take Me to National Information.

You can view the list of resources provided there the same way as the Florida listing.